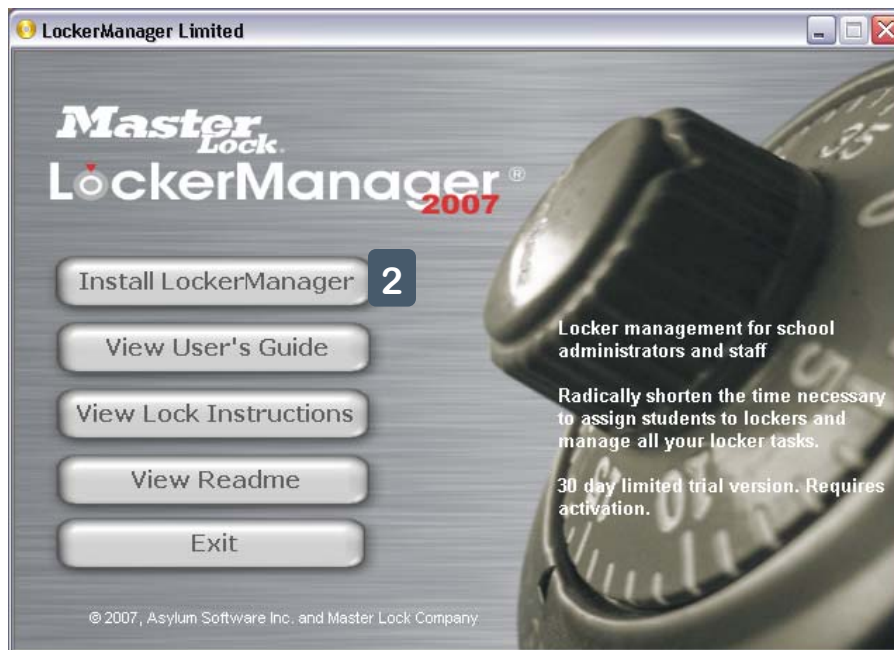


## Installing LockerManager for the First Time.

**Note:** This process takes a few minutes to complete.

### Install LockerManager



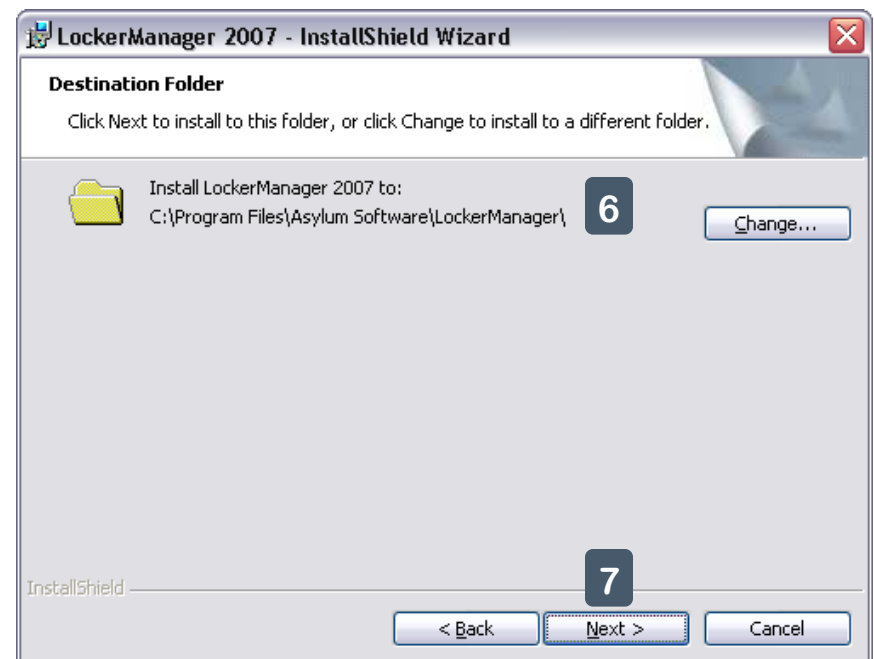
1. Insert the **Master Lock LockerManager 2007** product CD into the computers' CD-ROM Drive.
2. Click *Install LockerManager*.

3. Click *Next*.

## Install LockerManager



4. After carefully Reading the **License Agreement**; Click the circle Next to *I accept the terms in the license agreement* or *I do not accept the terms in the license agreement*.
5. Click Next.



6. Ensure the Install Location is Correct.
7. Click Next.

## Install LockerManager



8. Ensure the **Destination Folder** selected is correct.
  - Click Back to change
9. Click *Install*.



10. Click *Finish* to complete installation.